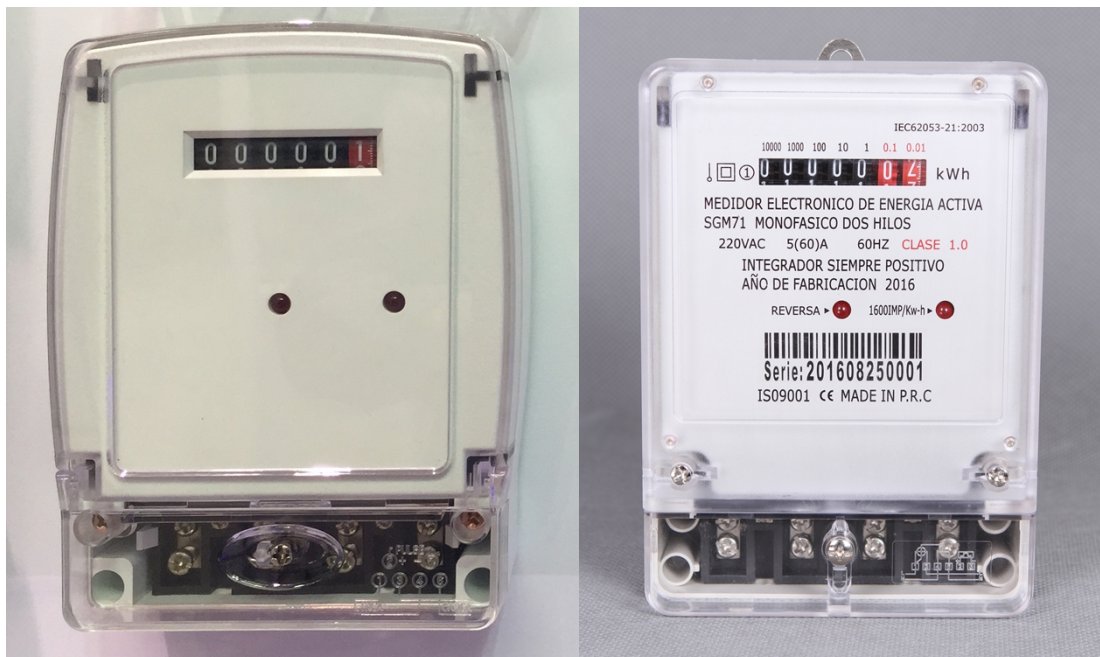


DDS238 single phase static watt hour meter (E1215)



The meter is designed to measure single phase two wire AC active energy. It adopt LSI and SMT technology, the key component are long life international brand product. All of its functions comply with the relative technical requirement for class 1 single phase watt hour meter in IEC62053-21. It is a long life meter with the advantage of high stability, high over load capability, low power loss and compact size.

Basic Function

- ★mechanical step register 5+2(default), 6+1, anti-reverse protection
- ★Bi-directional total active energy measurement, reverse active energy measure in the total active energy
- ★Pulse LED indicates working of meter, Pulse output with optical coupling isolation
- ★Reverse LED indicates the reverse current direction or wire reverse connect
- ★Anti-tamper construction case design, it can not open even the seal screw loss
- ★Two type of cases(protective-class I and II) are available

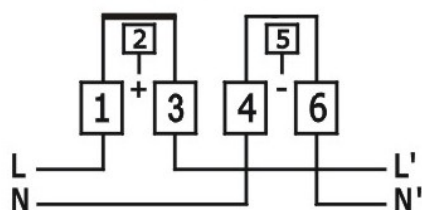
Technical Data

Rate voltage	110V,120V,220V,230,240V
Working voltage range	0.8~1.2Un
Rate Current	5(60)A, 10(100)A, or special required
Frequency	50Hz or 60Hz
Connection mode	Direct type
Display	mechanical step register
Accuracy class	1.0
Power consumption	<1W/10VA
Start current	0.004Ib
AC voltage withstand	4000V/25mA for 60 sec
Impulse Voltage	6kV 1.2μs waveform

DDS238 single phase static watt hour meter (E1215)

IP grade	IP51 or IP54
Constant	800~6400 imp/kWh
Pulse output	Passive pulse, pulse width is 80 ± 5 ms
Executive standard	IEC61036, IEC62053-21, IEC62052-11
Work temperature	-30°C~70°C
Outline dimension LxMxH	145x105x50.5mm (short terminal cover L1) 175x105x50.5mm (Long terminal cover L2)
Weight	Approx 0.4kg

Wire connection



Outline dimension

